

求積表

現況平面図 (縮尺1/250)

所在：秋田市榑山共和町

地番 ① 1-5				
NO	Xn	Yn	Yn+1-Yn-1	Xn · (Yn+1-Yn-1)
PL4	-32692.235	-61455.650	5.564	-181899.595540
B24	-32696.687	-61450.278	3.619	-118329.310253
B15	-32699.428	-61452.031	1.372	-44863.615216
B1	-32701.431	-61448.906	0.988	-32309.013828
PK2	-32704.927	-61451.043	-9.066	296502.868182
PL5	-32702.168	-61457.972	-4.799	156937.704232
S31	-32693.023	-61455.842	2.322	-75913.199406
合計				125.838171
合計面積				62.9190855
地積				62.91 m ²

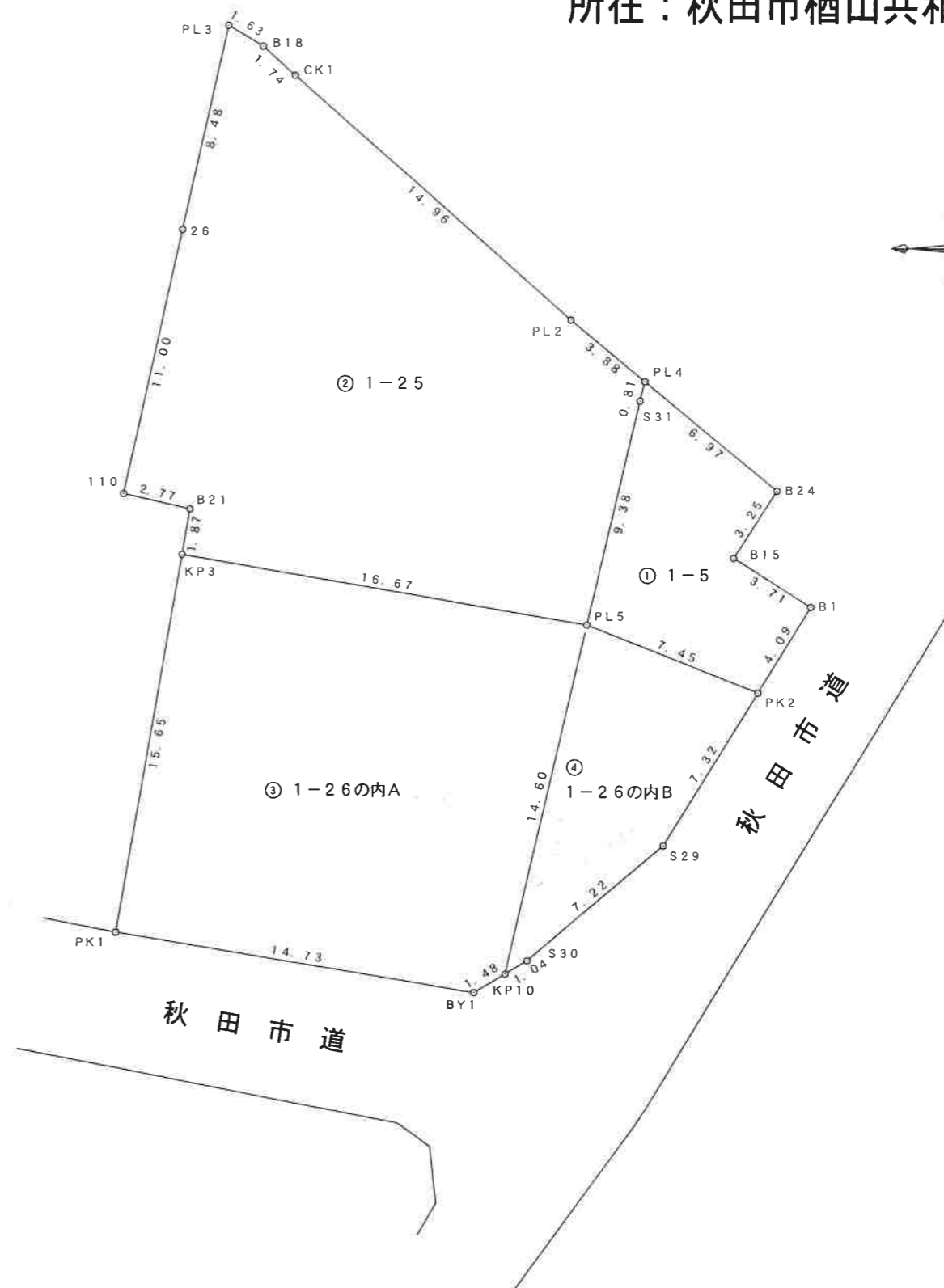
地番 ② 1-25				
NO	Xn	Yn	Yn+1-Yn-1	Xn · (Yn+1-Yn-1)
PL3	-32677.861	-61472.580	3.249	-106170.370389
B18	-32678.687	-61471.164	2.711	-88591.920457
CK1	-32679.855	-61469.869	12.528	-409413.223440
PL2	-32689.747	-61458.636	14.219	-464815.512593
PL4	-32692.235	-61455.650	2.794	-91342.104590
S31	-32693.023	-61455.842	-2.322	75913.199406
PL5	-32702.168	-61457.972	-18.571	607311.961928
KP3	-32699.361	-61474.413	-16.118	527048.300598
B21	-32697.511	-61474.090	-2.386	78016.261246
110	-32696.895	-61476.799	-0.323	10561.097085
26	-32686.148	-61474.413	4.219	-137902.858412
合計				614.830382
合計面積				307.4151910
地積				307.41 m ²

地番 ③ 1-26の内A				
NO	Xn	Yn	Yn+1-Yn-1	Xn · (Yn+1-Yn-1)
KP3	-32699.361	-61474.413	19.133	-625636.874013
PL5	-32702.168	-61457.972	13.127	-429281.359336
KP10	-32716.397	-61461.286	-4.589	150135.545833
BY1	-32717.161	-61462.561	-15.819	517552.769859
PK1	-32714.781	-61477.105	-11.852	387735.584412
合計				505.666755
合計面積				252.8333775
地積				252.83 m ²

地番 ④ 1-26の内B				
NO	Xn	Yn	Yn+1-Yn-1	Xn · (Yn+1-Yn-1)
PL5	-32702.168	-61457.972	10.243	-334968.306824
PK2	-32704.927	-61451.043	3.081	-100763.880087
S29	-32711.165	-61454.891	-9.344	305653.125760
S30	-32715.858	-61460.387	-6.395	209217.911910
KP10	-32716.397	-61461.286	2.415	-79010.098755
合計				128.752004
合計面積				64.3760020
地積				64.37 m ²

総合計面積 687.5436560 m²

地番	面積
① 1-5	62.9190855 m ²
② 1-25	307.4151910 m ²
③ 1-26の内A	252.8333775 m ²
④ 1-26の内B	64.3760020 m ²



※ 測点KP10は、S31-PL5の延長線であり、BY1-S30との交点です。